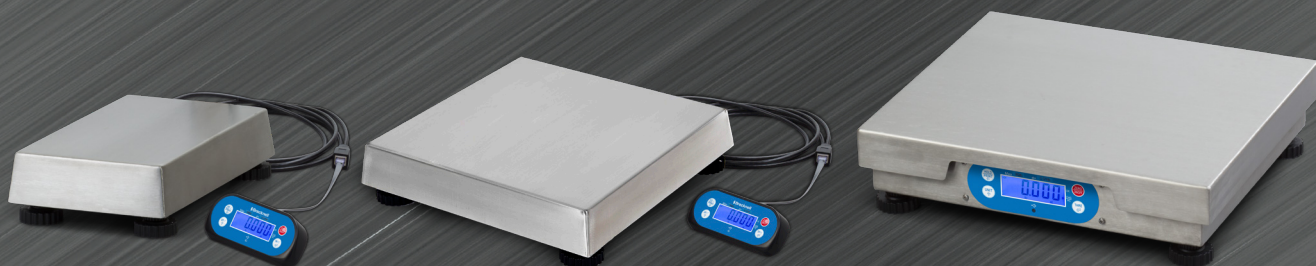


VALUE IN  
WEIGHING

The 6700U Series Point of  
Sale Scale that allows you  
to weigh each ingredient as  
it's placed on the scale

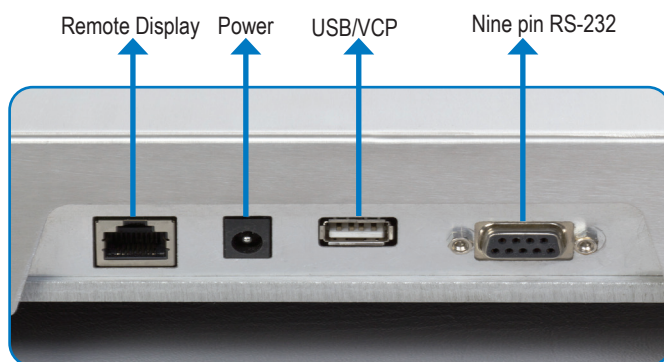






The 6700U Series Point of Sale scale saves time and money at the register. Get accurate weight measurements every time, saving on ingredient costs and maintain product quality. Features include auto zero tracking, multi-point calibration, hold, check and count weighing. The adjustable filter settings, reduce environmental vibration noise for rapid setting and quick measurements.

**Interface:** Electronic cash registers and most POS computer terminals and point of sale software. Allows a fast and simple POS connection, ideal for linking into ECR Electronic Cash Registers or other POS controlled software systems.



**Communication Protocols:** Via USB or RS-232 allows communication to other electronic devices and point of sale software.

#### **Four Ways to Setup Scale:**

1. Linked into POS system for produce weighing
2. Configured for hands free portion control weighing
3. Configured for check weighing
4. Configured for basic counting

**"Touchless" Tare:** When making the perfect pizza, sub or pie, it always comes down to accurate portion control. The touchless tare feature quickly allows the operator to accurately weigh out each ingredient on the scale just by simply waving their hand over the display to quickly tare off the scale between ingredients. Its fast and simple, with less risk of contamination from repeatably touching the scales keypad.



**Construction:** 305 stainless steel platter that is easily cleaned after each order.

**NTEP Approval:** Legally approved for buying or selling goods by weight.

**NSF Approval:** Ensures the product has been designed and manufactured to guarantee it's food safe and easy-to-clean.

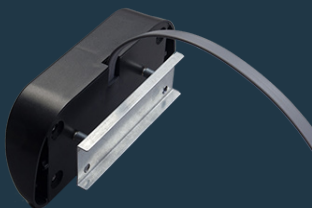


**Approval:** NTEP 13-074\*, Measurement Canada AM-5912C, NSF/ANSI standard 169 UL, CE.



Measurement Canada

## Options:



**Mounting Bracket:**  
Easily mount the display on a wall for a clear view.



**Display Bracket:**  
Easily mount the display to front of scale.



**Display Post:** 12"



**Remote Display:**  
Available with 24" or 7' cable.



## Specifications USA

Model/Capacity*	6702U	6710U	6720U
<b>Capacity</b>	5, 15, 30 lb	15, 30 lb	15, 30, 60 lb
<b>Unit</b>	lb, lb/oz*, kg, g		
<b>Display</b>	5½ digits seven segments 0.58" / 15 mm high LCD with blue backlight		
<b>Platform Dimension</b>	6" x 10" 152 mm x 254 mm	10" x 10" 254 mm x 254 mm	12" x 14" 305 mm x 355 mm
<b>Remote Display Dimension</b>	2.4" x 5.8" x 1.1" 61.8 mm x 149.1 mm x 29 mm		Optional
<b>Operator Keys</b>	Hold/Print, On/Off/Zero, Unit, Tare		
<b>Power</b>	9 VDC, 600mA power adapter with center positive (included) or USB (VCP) cable (not included)		
<b>Communication</b>	USB and nine pine RS-232		
<b>Certifications</b>	CE, EC, FCC Compliant, Measurement Canada, NTEP, NSF/ANSI Standard 169, Prop 65, RoHS 2, UL/CUL power adapters, WEEE		



6702U shown with optional tower



6710U shown with optional front mounted bracket



6720U shown with optional external display

## Specifications EUROPE

Model/Capacity*	6702U	6710U	6720U
<b>Capacity</b>	0-3 kg x 0.01 kg 3-6 kg x 0.002 kg	0-3 kg x 0.01 kg 3-6 kg x 0.002 kg 0-6 kg x 0.002 kg 6g-15 kg x 0.005 kg	0-15 kg x 0.005 kg 15-30 kg x 0.01 kg
<b>Unit</b>	kg, g		
<b>Display</b>	5½ digits seven segments 0.58" / 15 mm high LCD with blue backlight		
<b>Platform Dimension</b>	152 mm x 254 mm 6" x 10"	254 mm x 254 mm 10" x 10"	305 mm x 355 mm 12" x 14"
<b>Remote Display Dimension</b>	2.4" x 5.8" x 1.1" 61.8 mm x 149.1 mm x 29 mm		Optional
<b>Operator Keys</b>	Hold/Print, On/Off/Zero, Unit, Tare		
<b>Power</b>	9 VDC, 600mA power adapter with center positive (included) or USB (VCP) cable (not included)		
<b>Communication</b>	USB and nine pine RS-232		
<b>Certifications</b>	CE, NSF/ANSI Standard 169, UK, WEEE		