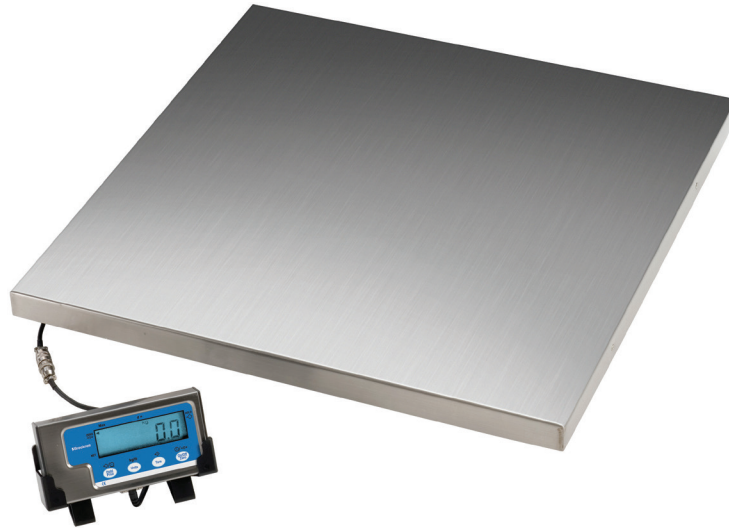


### Light Capacity Platform Scales



The WS300 light capacity platform scales provide a low cost solution for general purpose weighing of any item up to 300 kg capacity.

With 1 part in 6000 resolution these platform scales give a weighing performance of 300 kg x 50 g.

This well designed low profile scale incorporates four full load bridge load cells with self leveling, anti-slip feet to give a solid base in use.

The generous size weigh platforms are available in either WS300-55 (550 mm x 550 mm) or WS300-90 (900 mm x 550 mm with green rubber mat).

Five metres of cable connects the base to the stainless steel indicator which features clear 17 mm high LCD display digits. A plastic display bracket is included to enable the indicator to be wall or bench mounted.

Key display features are: on/off, push button tare to enable container weights to be removed and net weight only displayed; kg/lb switching to give readings in either metric or imperial measures and hold/print, which allows the weight to be either frozen even when the item being weighed is removed or the weight to be transmitted to a printer or other peripheral device via the RS-232 port.

The scales feature auto zero tracking to automatically compensate for small fluctuations in zero such as a build up of material on the platform. To extend battery life an auto-off feature is standard, with the scale switching itself off after two minutes of inactivity.



#### Accuracy

Within 0.1% of full capacity



#### Capacity

300 kg x 50 g



#### Power

Four AAA batteries (not included) or 9 VDC, 600mA adapter



#### Display

Five digit 17 mm / 0.625" high with seven segment LCD



#### Construction

Low profile stainless steel platform with mild steel understructure, stainless steel/ABS indicator wall bracket and desk mount included



#### Operating Keys

On/Off/Zero, Tare, Units, Hold/Print

# WS300 Light Capacity Platform Scales

## Specifications

**Unit:** kg, lb, lb/oz

**Overload Capacity:** Capable of withstanding 150% capacity of weight without damaging scale

**RS-232 Port:** Supplied complete with 10' cable (nine pin to nine pin type connector, bi-directional full duplex)

**Annunciators:** Zero, net, hold, kg/lb

**Calibration:** Front panel accessible

**Battery Life:** Battery life approximately 20 hours continuous

**Operating Temperature:**  
5° C to 35° C / 41° F to 95° F

**Platform Dimension (L x W x H):**  
WS300-55: 550 mm x 550 mm x 60 mm  
21.6" x 21.6" x 2.3"  
WS300-90: 900 mm x 550 mm x 60 mm  
35.4" x 35.4" x 2.3"

**Indicator Dimension (L x W x H):**

165 mm x 30 mm x 81 mm  
6.5" x 1.2" x 3.2"

**Product Weight:**

WS300-55: 15 kg / 33 lb  
WS300-90: 17 kg / 37 lb

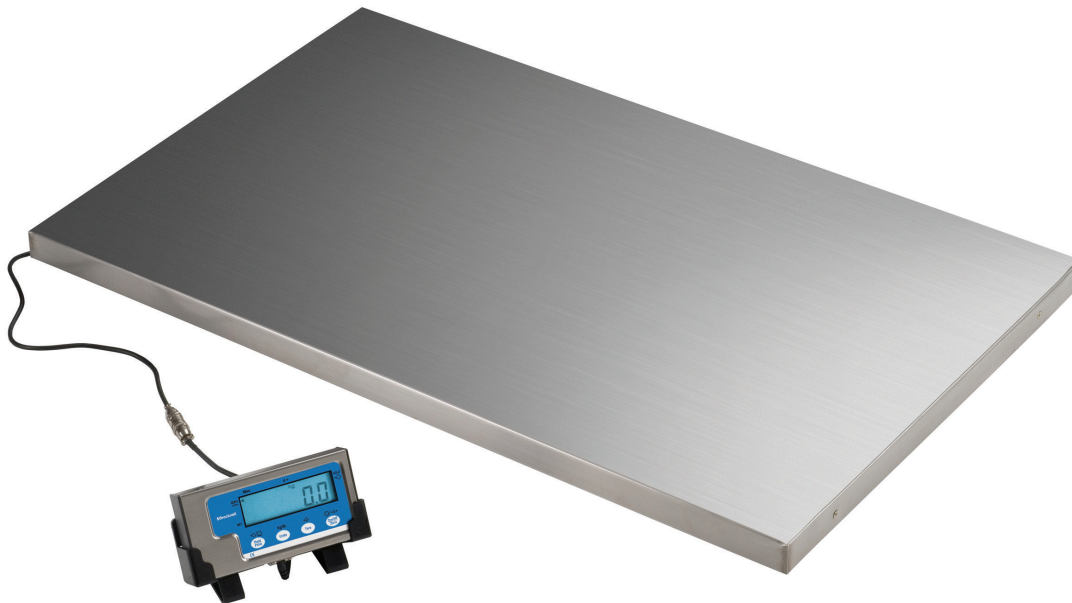
**Packaging Dimension (L x W x H):**

WS300-55: 690 mm x 690 mm x 140 mm  
WS300-90: 1030 mm x 690 mm x 140 mm

**Shipping Weight:**

WS300-55: 17 kg / 37 lb  
WS300-90: 19 kg / 41 lb (includes rubber mat)

**Certifications:** FCC compliant, Prop 65, UL /CUL power adapter, UKCA, CE, RoHS 3, WEEE



**Brecknell**

[www.brecknellscales.com](http://www.brecknellscales.com)

[www.brecknellscales.co.uk](http://www.brecknellscales.co.uk)

*Part of Avery Weigh-Tronix*

Brecknell is part of Avery Weigh-Tronix. Avery Weigh-Tronix is a trademark of Illinois Tool Works group of companies whose ultimate parent company is Illinois Tool Works Inc ("Illinois Tool Works"). Copyright © 2024 Illinois Tool Works. All rights reserved. This publication is issued to provide outline information only and may not be regarded as a representation relating to the products or services concerned. This publication was correct at the time of going to print, however Avery Weigh-Tronix reserves the right to alter without notice the specification, design, price or conditions of supply of any product or service at any time.

WS300\_RoW\_L\_100141.indd  
V5 AWT35-100141