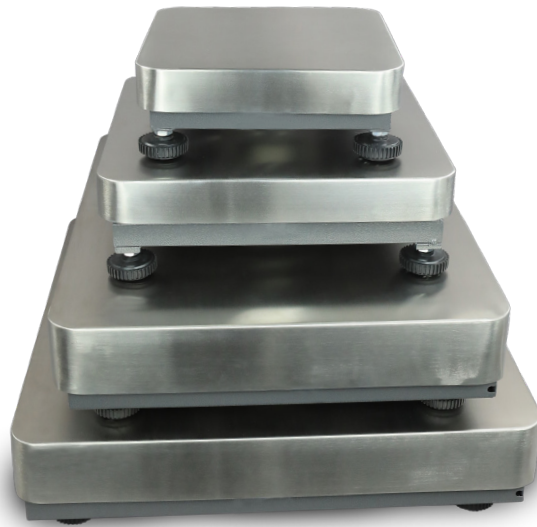


3900LP Bases

Carbon Steel Bench Base



- **Approval**– 5000d NTEP approved carbon steel bench base
- **Usability**– Ideal for a wide range of general weight applications
- **Construction**– Carbon steel fabricated frame with food grade 304 stainless steel top pan and a NEMA 4 aluminum load cell
- **Capacity**–
50 lb / 30 kg, 100 lb / 60 kg, 250 lb / 150 kg,
500 lb / 250 kg, 600 lb / 300 kg
- **Platform Dimension**–
11.8" x 11.8" / 30 cm x 30 cm
15.7" x 15.7" / 40 cm x 40 cm
15.7" x 19.7" / 40 cm x 50 cm
23.6" x 23.6" / 60 cm x 60 cm
19.7" x 23.6" / 50 cm x 60 cm

3900LP Carbon Steel Bench Bases

Features

The 3900LP Bench Base is an affordable, NTEP approved, 5000 division bench base which can be used for a wide range of general purpose weighing applications.

Construction: With 150% overload protection, this powder coated base frame is constructed using carbon steel tubular fabricated frame with four corner stops for extra load cell protection. The frame is equipped with four large, lockable, adjustable, anti-slip feet ideal for leveling the base if positioned on uneven ground.

Load Cell: The 3900LP Bench Base is fitted with a robust, approved, aluminum IP65 (NEMA 4) load cell with 10' of indicator cable, allowing it to be easily connected to any NTEP approved indicator

Top Pan: The 3900LP Bench Base is fully covered with a removable, hard-wearing food grade 304 stainless steel top pan

Base Dimension: The 3900LP is available in a wide range of dimensions and capacities from 11.8" / 30 cm square 50 lb / 30 kg up to 23.6" / 60 cm square 600 lb / 300 kg

Specifications

Capacity and Dimension:

Model	Capacity	Dimension (in)	Dimension (cm)
3900LP1212-50	50 lb / 30 kg	11.8 x 11.8 x 4.7	30 x 30 x 12
3900LP1616-100	100 lb / 60 kg	15.7 x 15.7 x 5.3	40 x 40 x 13
3900LP1620-250	250 lb / 150 kg	15.7 x 19.7 x 5.7	40 x 50 x 15
3900LP2024-600	600 lb / 300 kg	19.7 x 23.6 x 5.7	50 x 60 x 15
3900LP2424-250	250 lb / 150 kg	23.6 x 23.6 x 5.7	60 x 60 x 15
3900LP2424-500	500 lb / 250 kg	23.6 x 23.6 x 5.7	60 x 60 x 15

Construction: Carbon steel (power coated) with stainless steel top pan and IP65 (NEMA 4) aluminum load cell

Load Cell Cable Length: 10' / 3 m

Base Overload Protection: 150%

Options: Indicator column bracket

Packaging Dimension (L x W x H):

Model	Dimension (in)	Dimension (cm)
3900LP1212-50	18 x 14 x 6.7	45 x 36 x 17
3900LP1616-100	23 x 20.5 x 6.7	59 x 52 x 17
3900LP1620-250	26 x 18.1 x 6.7	66 x 46 x 17
3900LP2024-600	30.1 x 25 x 7.3	79 x 64 x 19
3900LP2424-250	31.7 x 29 x 7	81 x 74 x 18
3900LP2424-500	31.7 x 29 x 7	81 x 74 x 18

Shipping Weight:

Model	Shipping Weight
3900LP1212-50	13.8 lb / 6.2 kg
3900LP1616-100	20.4 lb / 9.2 kg
3900LP1620-250	24.3 lb / 11 kg
3900LP2024-600	50.7 lb / 23 kg
3900LP2424-250	55.4 lb / 25.1 kg
3900LP2424-500	55.4 lb / 25.1 kg

Certifications: 5000d NTEP CC #18-124



a division of Avery Weigh-Tronix, LLC

Brecknell

1000 Armstrong Dr., Fairmont, MN 56031
Toll free: 800-637-0529, Tel: 507-238-8702
Fax: 507-238-8271
e-mail: sales@brecknellscales.com
www.brecknellscales.com



Brecknell

Foundry Lane, Smethwick
West Midlands B66 2LP UK
Tel: +44 (0) 845 246 6717
Fax: +44 (0) 845 246 6718
Email: sales@brecknellscales.co.uk
www.brecknellscales.co.uk

