

Brecknell

6700U Series

POS Bench Scales



Measurement Canada



6702U shown with
optional tower
6" x 10"



6710U shown with
optional bracket
10" x 10"



6720U shown with internal display and optional
external display and 7' extension cable
12" x 14"

This NSF approved scale ensures that the product and facility where the product is made meets NSF standards for food safety. It has gone through extension testing to meet strict standards for public health protection. These capabilities are not found in many entry level kitchen/catering scales while also offering lasting performance.

The 6700U Series Point of Sale scale saves time and money at the register. Get accurate weight measurements every time, saving on ingredient costs and maintain product quality. The innovative "touchless" zero mechanism increases operator efficiency and greatly extends life of the scale and enhances food handling safety. Simply wave your hand over the display to zero the scale.

The 6700U interfaces to electronic cash registers and most POS computer terminals and point of sale software. Multiple communication protocols via USB or RS-232 allows communication to other electronic devices. The optional external display allows the customer to view the information at the same time.



Accuracy

≤ 0.01%



Capacity

5 lb / 2.5 kg, 15 lb / 7.5 kg,
30 lb / 15 kg, 60 lb / 30 kg



Power

9 VDC, 600mA power adapter
(AWT05-507975 US) with center positive
(included) or USB (VCP) cable
(not included)



Display

ABS plastic housing 0.58" / 15 mm
digits high LCD display with blue
backlight. Wall/rail bracket included.



Construction

6702U/6710U: Aluminum plate
understructure and stainless steel platter
6720U: Heavy duty cast aluminum X
shape support and stainless steel platter



Operator Keys

General (trade-approved) and
customizable weighing modes,
preset and touchless tare options,
and configurable communication
protocols: Print, NCI, ECR, PS60,
and Sharp emulators

VALUE IN
WEIGHING

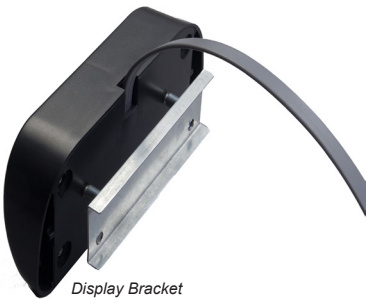
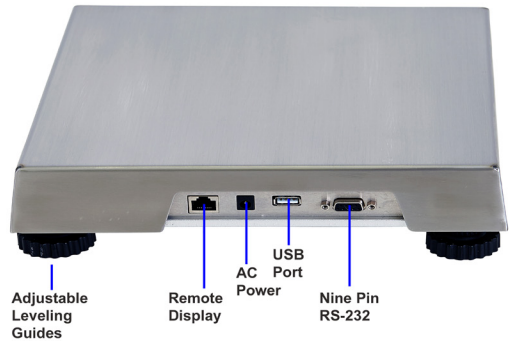
6700U Series (USB) POS Bench Scales

Specifications

- Unit:** lb, oz, lb/oz*, kg, g (*non-NTEP)
- Easy-to-Install:** Bi-directional nine pin RS-232 and USB port.
Interfaces to most electronic cash registers and point of sale software
- NSF Approved:** Making it ideal for use within most food processing environments
- Interface Protocols:** NCI, ECR, 8213 (Sharp), EH (PS60)
- Quick Disconnect:** Makes all cable connections easy
- "Touchless" Tare:** Just wave or place your hand over the display to zero the scale. Electronic mechanism enhances food handling safety.
- Check Weighing:** OK annunciator with alarm
- Count Weighing:** Piece counting
- Hold:** Positive peak, negative peak, average hold and auto hold
- Auto Zero Tracking:** Zero light indicator and manual control when out of range
- Zero Range:** Selectable up to full scale
- Alternate Calibration Points:** Allows use of less than full capacity weight for calibration

- Auto-Compensation:** Local gravity effects to avoid initial calibration with test weights
- Adjustable Filter Settings:** Reduce environmental vibration noise for rapid setting and quick measurements
- Communication:** USB (VCP) and nine pin RS-232
- Remote Display Enclosure (6702U/6710U) (L x W x H):**
2.4" x 5.8" x 1.1" / 62 mm x 148 mm x 29 mm
- Adjustable Height:**
6702U/6710U: 2.75" - 3.25" / 69 mm - 82 mm
6720U: 3.5" - 4" / 88 mm - 101 mm
- Shipping Weight:**
6702U 9" External Display: 8.5 lb / 3.8 kg
6710U 9" External Display: 11.2 lb / 5.10 kg
6720U Internal Display: 13.7 lb / 6.2 kg
6720U 7" External Display: 13.7 lb / 6.2 kg
- Certifications:** NTEP 13-074*, Measurement Canada AM-5912C, CE/UKCA, ETL power adapter, NSF/ANSI standard 169
- *Counting function non-trade approved*

Model/Capacity*	Part Number	Platter Size	lb	lb/oz*	oz	kg	g
6702U (5 lb) External display	816965006137	6" x 10" 152 mm x 254 mm	5 lb x 0.001 lb	N/A	80 oz x 0.02 oz	2.5 kg x 0.0005 kg	2500 g x 0.5 g
6702U (15 lb) External Display	816965005857		15 lb x 0.005 lb	15 lb x 0.1 oz	240 oz x 0.1 oz	7.5 kg x 0.002 kg	7500 g x 2 g
6702U (30 lb) External Display	816965006083		30 lb x 0.01 lb	30 lb x 0.2 oz	480 oz x 0.2 oz	15 kg x 0.005 kg	15,000 g x 5 g
6710U (15 lb) External Display	816965005864	10" x 10" 254 mm x 254 mm	15 lb x 0.005 lb	15 lb x 0.1 oz	240 oz x 0.1 oz	7.5 kg x 0.002 kg	7500 g x 2 g
6710U (30 lb) External Display	816965005871		30 lb x 0.01 lb	30 lb x 0.2 oz	480 oz x 0.2 oz	15 kg x 0.005 kg	15,000 g x 5 g
6720U (15 lb) Internal Display	816965005888	12" x 14" 305 mm x 355 mm	15 lb x 0.005 lb	15 lb x 0.1 oz	240 oz x 0.1 oz	7.5 kg x 0.002 kg	7500 g x 2 g
6720U (30 lb) Internal Display	816965005895		30 lb x 0.01 lb	30 lb x 0.2 oz	480 oz x 0.2 oz	15 kg x 0.005 kg	15,000 g x 5 g
6720U (30 lb) External Display	816965005901		30 lb x 0.01 lb	30 lb x 0.2 oz	480 oz x 0.2 oz	15 kg x 0.005 kg	15,000 g x 5 g
6720U (60 lb) Internal Display	816965006144		60 lb x 0.02 lb	60 lb x 0.5 oz	960 oz x 0.5 oz	30 kg x 0.01 kg	30,000 g x 10 g



STAY
CONNECTED
WITH US!



@brecknell-scales



@brecknell_scales

Brecknell®
brecknellscales.com

Part of Avery Weigh-Tronix

Brecknell is part of Avery Weigh-Tronix. Avery Weigh-Tronix is a trademark of Illinois Tool Works group of companies whose ultimate parent company is Illinois Tool Works Inc ("Illinois Tool Works"). Copyright © 2025 Illinois Tool Works. All rights reserved. This publication is issued to provide outline information only and may not be regarded as a representation relating to the products or services concerned. This publication was correct at the time of going to print, however Avery Weigh-Tronix reserves the right to alter without notice the specification, design, price or conditions of supply of any product or service at any time.