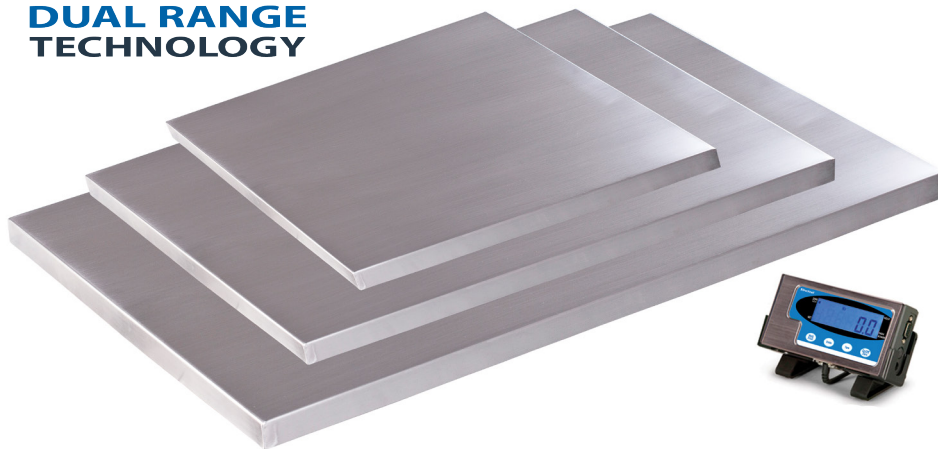


Brecknell**PS500****Compact Lightweight Floor Scale**

DR[™]
DUAL RANGE
TECHNOLOGY

**ONE SCALE. TWO CAPACITIES. SMART PRECISION.**

By automatically adjusting resolution across two capacity ranges, the PS500 Lightweight Floor Scale ensures accurate weighing whether the load is small or large - eliminating the need for multiple scales.

Versatile, low-profile floor scale designed for general weighing tasks up to 500 lb.

Perfect for locations with limited space, this scale works well in shipping and receiving areas, as well as farming or animal-care settings.

The PS500 series feature a rust-proof stainless-steel top, a low-profile base, and an ABS/steel-housed indicator. Each scale includes a standard RS232 port for printing data or interfacing with UPS/NCI shipping software. The convenient Hold Weight mode freezes the last weight shown on the screen, allowing for hands-free operation.

With dual power options - battery and AC adapter - the scale supports both portable use and fixed installation on walls or desks. Optional accessories include a 34" indicator stand. PS500-36 includes green rubber mat.

**Accuracy**

Within 0.2% off full capacity

**Dual Range Capacity**

250 lb x 0.1 lb - 500 lb x 0.2 lb
 250 lb x 0.02 oz - 500 lb x 0.05 oz
 100 kg x 0.5 kg - 250 kg x 0.1 kg

**Power**

Four AAA batteries (not included)
 or 9 VDC, 600mA adapter (included)

**Display**

Five 0.625"/ 16 mm digits LCD

**Construction**

Low profile stainless steel platform
 with mild steel understructure and
 stainless steel/ABS indicator with
 wall bracket and desk mount

**Operator Keys**

On/Off/Zero, Tare, Units (lb/kg),
 Hold/Print

**VALUE IN
 WEIGHING**

PS500 Compact Lightweight Floor Scale

Specifications

Unit: lb, lb/oz, kg

Functions: Weight hold, stable weight indicators with auto power off

Overload Capacity: Capable of withstanding 150% capacity of weight without damaging scale

COMM Port: RS232, bi-directional, full duplex (cable not included)

Calibration: Front panel accessible

Battery Life: Battery life approximately 20 hours continuous

Operating Temperature: 41° F to 95° F / 5° C to 35° C

Platform Dimension (L x W x H):

22" x 22": 22" x 22" x 2.7"
559 mm x 559 mm x 51 mm

36" x 22": 36" x 22" x 3.1"
906 mm x 559 mm x 51 mm

42" x 22": 42" x 22" x 2.7"
1067 mm x 559 mm x 51 mm

Packaging Dimension (L x W x H):

22" x 22": 26" x 24" x 4"
660 mm x 609 mm x 101 mm

36" x 22": 39" x 24" x 4"
965 mm x 609 mm x 101 mm

42" x 22": 44" x 24" x 4"
1117 mm x 609 mm x 101 mm

Indicator Dimension (L x W x H):

6.5" x 1.2" x 3.2"
165 mm x 30 mm x 81 mm

Platform Overall Height: 37" / 940 mm

Indicator Weight: 10 lb / 4.5 kg

Indicator Packaging Dimension (L x W x H):

9.25" x 7.25" x 3"
235 mm x 184 mm x 76 mm

Indicator Shipping Weight:

PS500-22: 35 lb / 16 kg
PS500-36: 37 lb / 26 kg (includes rubber mat)
PS500-42: 63 lb / 29 kg

Certifications: FCC compliance, ETL power adapter

Options (not included):

Indicator Floor Stand (L x W x H):
13.8" x 13.8" x 1"
350 mm x 350 mm x 25 mm



Shown with optional indicator stand and PS500-36 with rubber mat



**STAY
CONNECTED
WITH US!**



Brecknell®

brecknellscales.com