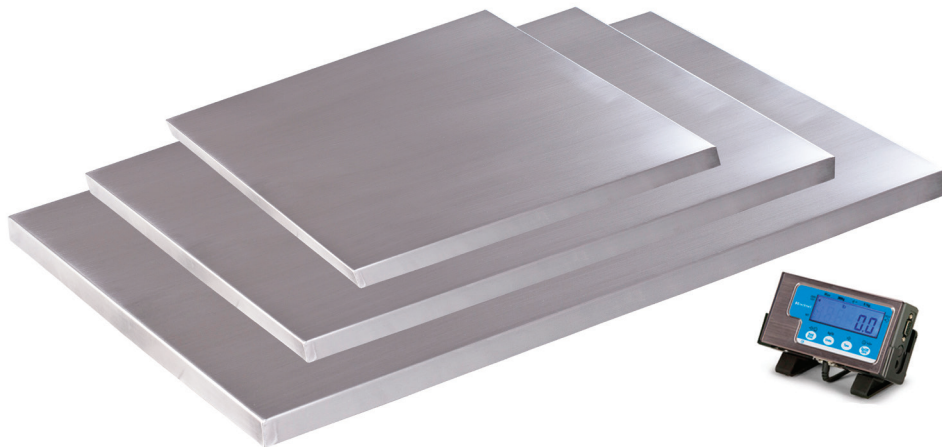


 **Brecknell**

**PS500**

Compact Light Weight Floor Scale



The PS500 Light Capacity Floor Scales provide a low-cost solution for general weighing of any item up to 500 lb capacity. This well-designed low-profile base design with stainless steel top plate and a rugged mild steel understructure incorporate four load cells with large adjustable anti-slip feet to give a solid base when in use. The PS500-36 and PS500-42 comes with a green rubber mat ideal for vet and other animal weighing applications. 15' of cable connects the base to the stainless steel indicator which features a clear 0.625" / 16 mm digit, backlit LCD display. A plastic display bracket also allows the indicator to be quickly and easily wall or bench mounted.

The scales features four simple to operate function keys: On/Off/Zero, Tare, Units (lb/kg), Hold. Hold feature can be set to work both as a general hold or as animal averaging hold to capture weight of a moving animal. To extend battery life an auto-off feature is standard. Powered by four AAA batteries or the external power adapter provided. This product has a battery saving feature to auto switch off after two minutes of inactivity prolonging battery life.



**Accuracy**

0.2% off full capacity



**Capacity**

500 lb x 0.2 lb / 500 lb x 5 oz /  
250 kg x 0.1 kg



**Power**

Four AAA batteries or 9 VDC,  
600mA adapter (both included)



**Display**

Five 0.625" / 16 mm digits LCD



**Construction**

Low profile stainless steel platform  
with mild steel understructure and  
stainless steel/ABS indicator with  
wall bracket and desk mount



**Operator Keys**

On/Off/Zero, Tare, Units (lb/kg),  
Hold/Print

**VALUE IN  
WEIGHING**

# PS500 Compact Light Weight Floor Scale

## Specifications

**Unit:** lb, lb/oz, kg

**Functions:** Weight hold, stable weight indicators with auto power off

**Overload Capacity:** Capable of withstanding 150% capacity of weight without damaging scale

**RS-232:** Supplied complete with 10' cable (nine pin to nine pin type connector, bi-directional full duplex)

**Calibration:** Front panel accessible

**Battery Life:** Battery life approximately 20 hours continuous

**Operating Temperature:** 41° F to 95° F / 5° C to 35° C

**Platform Dimension (L x W x H):**

22" x 22": 22" x 22" x 2.7"  
559 mm x 559 mm x 51 mm

36" x 22": 36" x 22" x 3.1"  
906 mm x 559 mm x 51 mm

42" x 22": 42" x 22" x 2.7"  
1067 mm x 559 mm x 51 mm

**Packaging Dimension (L x W x H):**

22" x 22": 26" x 24" x 4"  
660 mm x 609 mm x 101 mm

36" x 22": 39" x 24" x 4"  
965 mm x 609 mm x 101 mm

42" x 22": 44" x 24" x 4"  
1117 mm x 609 mm x 101 mm

**Indicator Dimension (L x W x H):**

6.5" x 1.2" x 3.2"  
165 mm x 30 mm x 81 mm

**Platform Overall Height:** 37" / 940 mm

**Indicator Weight:** 10 lb / 4.5 kg

**Indicator Packaging Dimension (L x W x H):**

9.25" x 7.25" x 3"  
235 mm x 184 mm x 76 mm

**Indicator Shipping Weight:**

PS500-22: 35 lb / 16 kg  
PS500-36: 37 lb / 26 kg  
PS500-42: 63 lb / 29 kg (includes rubber mat)

**Certifications:** FCC compliance, ETL power adapter

**Options (not included):**

Floor Stand (L x W x H):  
13.8" x 13.8" x 1"  
350 mm x 350 mm x 25 mm



**Brecknell®**

[brecknellscales.com](http://brecknellscales.com)

[brecknellscales.co.uk](http://brecknellscales.co.uk)

Part of Avery Weigh-Tronix

Brecknell is part of Avery Weigh-Tronix. Avery Weigh-Tronix is a trademark of Illinois Tool Works group of companies whose ultimate parent company is Illinois Tool Works Inc ("Illinois Tool Works"). Copyright © 2023 Illinois Tool Works. All rights reserved. This publication is issued to provide outline information only and may not be regarded as a representation relating to the products or services concerned. This publication was correct at the time of going to print, however Avery Weigh-Tronix reserves the right to alter without notice the specification, design, price or conditions of supply of any product or service at any time.

PS500\_L\_07202-0019.indd  
V5 07202-0019